

Product Information



4680IEP160P63

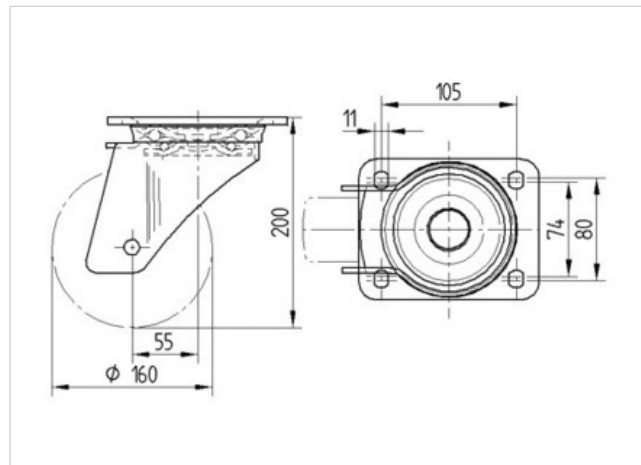
EAN 4031582307801

Swivel caster, housing made of very heavy pressed steel, reinforced, bright zinc plated, blue passivated, sealed swivel double ball bearing, reinforced and heat-treated ball covers, riveted king pin, wheel axle with nut. Wheel center made of Aluminum, Tread: black elastic-tire, vulcanized, precision ball bearing, plate fitting



Technical Data

Wheel diameter	6.3 in
Tread width	1.97 in
Plate size	5.51 x 4.33 in
Plate hole centers	4.13 x 3.15/2.91 in
Plate hole	0.43 in
Offset	2.17 in
Swivel Interference	10.63 in
Overall height	7.87 in
Temperature	- 4 / + 185 °F
Standard	EN 12532
Weight	7.452 lbs
Load capacity (dynamic)	770 lbs
Load capacity (static)	1545 lbs
Swivel Radius	5.31 in
Hardness of tread	A 67 Shore



Roll performance	+	+	+	+	+
Movement noise	+	+	+	+	+
Attrition	+	+	+	+	+
Corrosion resistance	+	+	+	+	+

Product Information



4680IEP160P63

EAN 4031582307801

