

# Product Information



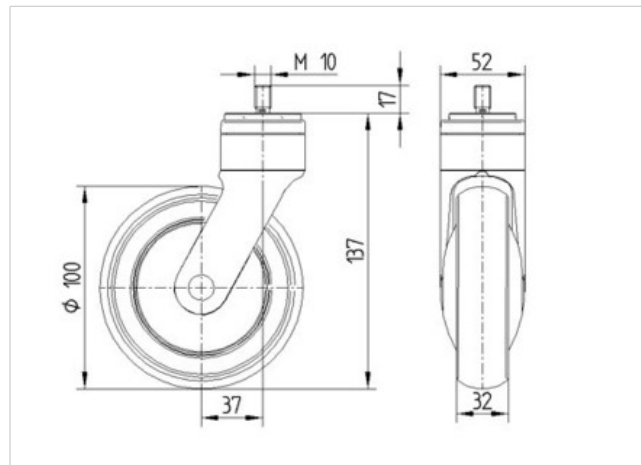
## 5320XSX100S70

EAN 4031582309812

Swivel caster, housing and wheels made from high grade synthetic materials, with integrated threadguards, all metal parts are bright zinc plated, yellow thick layer passivated. Wheel center made of Polyamide, electric conductive, Tread made of injected Polyurethane, with threadguards, precision ball bearing, sealed., threaded stem with hex neck  
Please read the assembly instructions in the service area of the TENTE website.

### Technical Data

Wheel diameter	3.94 in
Tread width	1.26 in
Threaded stem	M 10 x 17
Offset	1.46 in
Swivel Interference	6.85 in
Overall height	5.39 in
Temperature	- 14 / + 104 °F
Standard	EN 12530
Weight	0.972 lbs
Load capacity (dynamic)	220 lbs
Load capacity (static)	440 lbs
Swivel Radius	3.43 in
Hardness of tread	D 40 Shore



Roll performance	+	+	+	+	+
Movement noise	+	+	+	+	+
Attrition	+	+	+	+	+
Corrosion resistance	+	+	+	+	+



# Product Information



## **5320XSX100S70**

EAN 4031582309812

