

Product Information

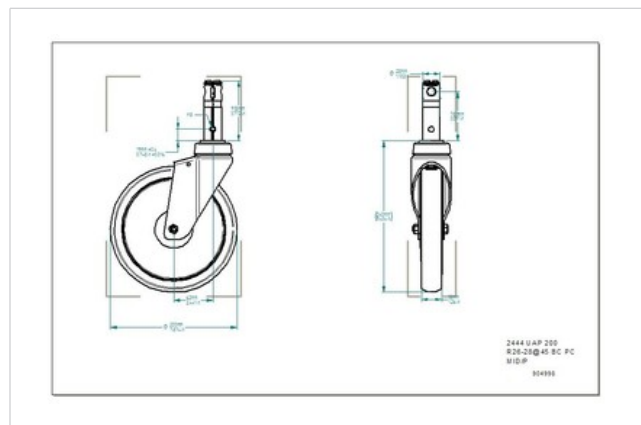


2444UAP200R26-28S

Swivel Caster with central, total or directional lock, housing made of pressed steel, bright zinc plated, blue passivated, covered precision swivel bearing, hardened balls and tracks, bearing sleeve welded to fork, wheel axle with nut. Wheel center made of Polyamide, Tread: Polyurethane, precision ball bearing, with threadguards, stem with cam hole for profile bars



Technical Data	
Wheel diameter	7.87 in
Tread width	1.26 in
Bolt-Ø	1.10 in
Bolt length	3.78 in
Offset	2.44 in
Swivel Interference	12.76 in
Overall height	9.45 in
Temperature	- 40 / + 176 °F
Standard	EN 12531
Load capacity (dynamic)	330 lbs
Load capacity (static)	660 lbs
Swivel Radius	6.38 in
Hardness of tread	D 40 Shore



Roll performance	+	+	+	+	+
Movement noise	+	+	+	+	+
Attrition	+	+	+	+	+
Corrosion resistance	+	+	+	+	+