

# Product Information



## 2944XSX125R26-28S45

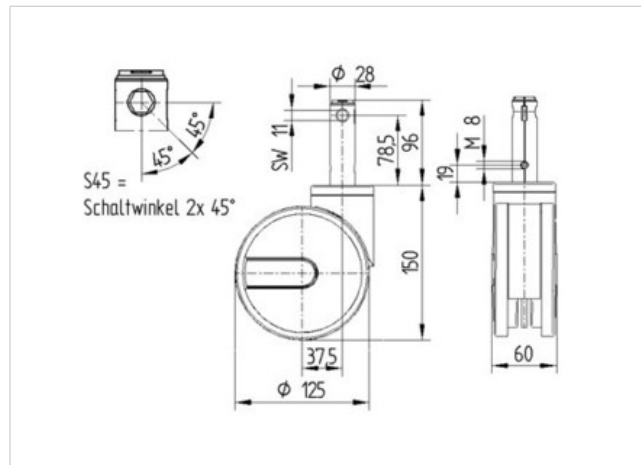
EAN 4031582341911

Swivel Caster with central, total or directional lock, Frame made of pressed steel, precision ball bearing in swivel head, housing with synthetic cover. Wheel center made of Polyamide, electric conductive, Tread made of injected Polyurethane, with threadguards, precision ball bearing, sealed., stem with cam hole for profile bars

**Hint:**TÜV Süd certified product.Washable casters must be sealed in the fitting area by the hospital bed manufacturer.



Technical Data	
Wheel diameter	4.92 in
Tread width	0.47 in
Caster width	2.36 in
Bolt-Ø	1.10 in
Bolt length	3.78 in
Offset	1.48 in
Swivel Interference	7.87 in
Overall height	5.91 in
Temperature	- 22 / + 176 °F
Standard	EN 12531
Weight	3.269 lbs
Load capacity (dynamic)	275 lbs
Load capacity (static)	550 lbs
Swivel Radius	3.94 in
Hardness of tread	D 40 Shore



Roll performance	+	+	+	+	+
Movement noise	+	+	+	+	+
Attrition	+	+	+	+	+
Corrosion resistance	+	+	+	+	+

