

Castors for hospital and care beds



Castors for hospital and care beds

TENTE has become market leader in all kinds of different areas with its innovative and high quality products. Even in the field of medical resources with castors for hospital and care beds.

In this area wheels and castors are subject to especially high demands. They must be strong, washable, easy to manoeuvre with a life long span. Decades of experience in the

development of bed castors make it possible for all this criteria to be fulfilled.

The high quality of all the products are already shown in the development stage and ensured in the completed series

by means of highly developed production techniques.

All of our castors are manufactured in our DIN/ISO 9001 certified factory in accordance with standards and norms EN 12526 and EN 12533.

Only first class raw materials together with high grade components are selected for hospital bed castors which are resistant against all of today's known cleaning and disinfectant liquids. Regular cleaning at temperatures above 90°C are no problem due to sealed precision ball bearings.



Electric conductive castors are available for use in operating theatres. Of course, these are non marking and will cause no contact discoloration to different floor coverings.

TENTE bed castors are offered with various fixing elements. The tube fittings provided by TENTE can exchange all

other locking systems found on the market.

The locking functions are integrated in the stem fitting. There are total locking castors

whereby the swivel head and wheel

are lockable at the same time, and

central locking swivel castors with total or

directional lock function. The different cam

positions are: total lock, free or directional

lock. All castors on a bed can be connected

via profile bars. The result is an easy action central locking

system, satisfying all customers' wishes.

The following pages will provide an overview on all available TENTE bed castors.

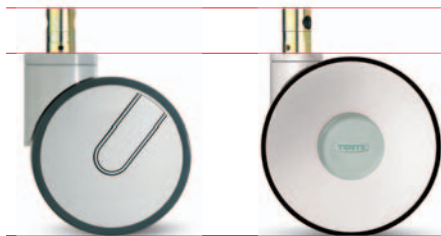


LINEA Series 5944 / 5946

To increase the level of comfort and safety for patients, hospital beds should be as low as possible.

To meet this requirement, TENTE has developed the new twin wheel castor series LINEA.

It combines an elegant design, clear lines and high-grade materials with a presently unique overall height which is only a few millimetres above the wheel diameter.



Comparison of the overall height
125 mm Wheel-Ø 150 mm Wheel-Ø

Thus, a 150 mm castor has an overall height of only 155 mm. This provides smooth running properties of a 150 mm castor with fitting dimensions of conventional 125 mm twin wheel castors.

Another important advantage is the extremely easy swivelling thanks to two precision ball bearings in the swivel head.



Award for excellent Design



interzum award:
intelligent material & design
"high product quality" award



The maintenance-free central lock engages with the toothed interior of the wheel rim.

Aesthetics are becoming ever more important in the design of hospital furniture.

The significance of the aesthetic design should not be underestimated. Medical devices, particularly hospital beds, should provide a feeling of safety to the patient.

Therefore, the aesthetic design was given special emphasis. The result is a streamlined castor with a harmonious aesthetic design. The smooth surfaces prevent dirt pick-up and are easy to clean.

The colour of the castor can be adapted to the adjoining components and the bedframes.

A transparent, non-rotating cover offers space in the centre of the wheel for a company logo or signs for electrical conductivity or washability.

International Patents applied for.

Housing:

Made from high grade synthetic materials, two precision ball bearings in the swivel head

Wheel:

UAP

Wheel centre: Polyamide
Tread: Polyurethane,
precision ball bearing washable version with sealed precision ball bearing available.

The twin wheel castors are available as:

5940: Swivel castor

5944: Swivel castor with total-
or directional lock

5946: Swivel castor
with total lock

Wheelsize: 150 mm

Load capacity: 150 kg each



Fittings:



R 36 XS



R 36-32 S30



R 05

Twin wheel castors Series 2940

Particularly high demands are placed on wheels and castors used in the hospital environment. They must be durable, stable, washable, and easily maneuvered. The TENTE twin wheel castor meets all of these requirements.

The castor chassis is manufactured from two steel pressed halves. This protects individual components from deformation or cracking when the castor is exposed to shocks or impacts. Plastic wheels manufactured from high-quality reinforced raw materials, polyurethane tires, and sealable precision bearings guarantee excellent product quality.

Hospital beds are becoming increasingly heavy due to additional specialized accessories fitted on the beds. Depending on the hospital, beds are moved on different types of flooring.

With its extremely low rolling and swivel resistance, our twin wheel castor not only improves maneuverability, but also increases the travel comfort.



Housing:

Frame made of pressed steel, precision ball bearing in swivel head and wheel, housing cover made of synthetic plastics

Wheels:

UAP

Wheel centre: Polyamide
Tread: Polyurethane, precision ball bearing washable version with sealed precision ball bearing available.

XSX electric conductive, non-marking

Wheel centre: Polyamide
Tread: Polyurethane, precision ball bearing, sealed, washable

Twin wheel castors are available as:

2940: Swivel Castor

2944: Swivel Castor with total- or directional lock

2946: Swivel Castor with total lock

Wheelsizes:

100 mm, 125 mm and 150 mm

Load capacity depends of size:

125 kg up to 150 kg each



Awards for excellent Design



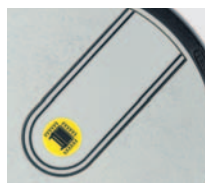
Award for Highest Design Quality presented by the Design-Center North Rhine Westphalia



Awarded by DDC German Designer Club



Federal Award for Product Design presented by the Minister for Economy



Electrically conductive models can be recognised by the yellow dot.

Fittings:



R 26-28S45



R 36-34



R 36-32S30



R 05

INTEGRAL Series 2040

When developing the "INTEGRAL" series, we attached great importance to a high degree of misuse protection. A robust braking system and the solid steel housing are capable of withstanding extreme shock stress, thereby guaranteeing stability, a long working life and reliability.

Very low swivel and rolling resistances on the most varied types of surfaces have been implemented for all hospital beds by means of the intelligent combination of precision grooved ball-bearings, polyurethane tread and excellent wheel geometry. You can feel this clearly with the excellent manoeuvrability and the effortless moving of the hospital bed.

The smooth-running locking system operates at a low noise level. Wheellocking is achieved by pressure of the braking element on the lateral tread of the polyurethane tyre.

Of course the castor can be adjusted without having to go to the trouble of removing it or individual components.

Beautifully designed plastic covers are snapped on and ultrasonically welded. They function as a bumper, absorbing lateral collisions elastically and without permanent deformation.



Awards for excellent Design



Award for Highest Design Quality presented by the Design-Center North Rhine Westphalia



Award for Good Design awarded by Industry Forum Design, Hanover

Standard

Housing:

Frame made of pressed steel, blue zinc plated, precision ball bearing in swivel head and wheel, housing cover made of synthetic plastics

Wheels:

UAP

Wheel centre: Polyamide
Tread: Polyurethane, precision ball bearing

UAX

Wheel centre: Polyamide
Tread: Polyurethane, precision ball bearing, sealed

XSX electric conductive, non-marking

Wheel centre: Polyamide
Tread: Polyurethane, precision ball bearing, sealed, washable

Castors of the Series INTEGRAL are available as:

2040: Swivel Castor

2044: Swivel Castor with total- or directional lock

2046: Swivel Castor with total lock

Wheelsizes: 125 mm, 150 mm and 200 mm

The load capacity is 150 kg each



Rust-free

Housing:

Frame made of stainless steel, precision ball bearing in swivel head and wheel, housing cover made of synthetic plastics

Wheels:

UAX and XSX electric conductive, non-marking

with wheel-diameter 150 mm



Electrically conductive models can be recognised by the yellow cover of the swivel bearing

Fittings:



R26-28S45



R36-34



R36-32S30



R05

DECORA Series 5440

In line with the increasing need for design in the modern care bed sector, we developed a new castor, which not only looks good but fulfils hygiene requirements in the nursing sector.



Understandably the synthetic castor "DECORA" performs above and beyond the highest specifications of technical perfection. The attractive housing made of high grade synthetic material comes complete with the established TENTE wheels PJP. So for every application a quiet and smooth running is guaranteed.

As with all other TENTE bed castors, the locking mechanism is located within the stem fitting with its different functions.

By using new materials, we could create a quiet operating force reduced cam locking system. There is a choice of different stem sizes.

The dimensions of the castors including overall height are identical to the usual standard steel care bed castors. An exchange is therefore possible without any problems. See for yourself this well functioning design TENTE castor.



Housing:

Made from high grade synthetic materials, with integrated threadguards, precision ball bearing in swivel head and wheel.

Wheels:

PJP

Wheel centre: Polypropylene
Tread: TENTEprene (thermoplastic rubber), with integrated threadguards, precision ball bearing

Castors for home care beds of the series DECORA are available as:

5440: Swivel Castor

5444: Swivel Castor with total- or directional lock

5446: Swivel Castor with total lock

Wheelsizes: 100 mm and 125 mm

The Load capacity is 80 kg each.



Award for excellent Design



Award for Highest Design Quality presented by the Design-Center North Rhine Westphalia

Fittings:



R26-28S45



R 36-34



R36-32S30



R05

Care Bed Castors Series 2474 / 2476

This care bed castor is based on the multiple established institutional castor series 2470.

The modern shaped steel housings is equipped with the familiar TENTE institutional castor wheels and provide the optimal running tread for every floor covering.

This product is fitted with the integrated TENTE locking system providing the total and directional lock function.

The castors are produced at the usual high standard, typical of the TENTE brand, using the most modern manufacturing equipment.

Our product is advantageous due to its solid foundations, high-dynamic ratings and guaranteed low rolling and swivel resistances.



Housing:

Made of pressed steel, zinc-chromatised, double ball bearing swivel head, wheel axle with nut

Wheels:

PJO

Wheel centre: Polypropylene
Tread: TENTEprene (thermoplastic rubber), without threadguards, plain bearing

YGO electric conductive, non-marking

Wheel centre: Polypropylene
Tread: TENTEprene (thermoplastic rubber), without threadguards, plain bearing

PJP

Wheel centre: Polypropylene
Tread: TENTEprene (thermoplastic rubber), with threadguards, precision ball bearing

XSX electric conductive, non-marking

Wheel centre: Polyamide
Tread: Polyurethane, with threadguards, precision ball bearing, sealed

Cover-Design

Additional Snap-on synthetic covers turn the solid metal housing into a nicely designed product.



Available as:
Ø 150 mm,
The axle of the wheel is riveted for attaching the cover.



Available as:

- 2470: Swivel Castor
- 2474: Swivel Castor with total- or directional lock
- 2476: Swivel Castor with total lock

Wheelsizes:
100 mm, 125 mm and 150 mm

Load capacity depends of size:
80 kg up to 100 kg each

Fittings:



R26-28S45



R 36-34



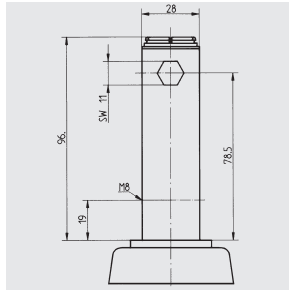
R36-32S30



R05

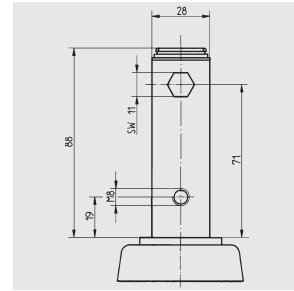
Fitting R26-28S 45 M8 Standard

Tube fitting for 28 mm inside tube diameter. M8 threaded hole for fitting with two screws in the direction to travel, 19 mm from the top of the castor to the centre of the fitting hole. Cam hole 90 degrees to the direction of travel.



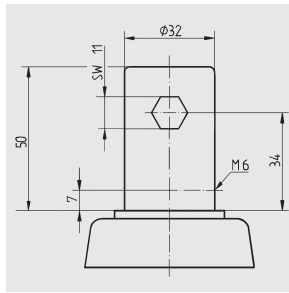
Fitting R36-28S 45 M8 Non-Standard

Tube fitting for 28 mm inside tube diameter. M8 threaded hole for fitting with two screws 90 degrees to the direction of travel, 19 mm from the top of the castor to the centre of the fitting hole. Cam hole 90 degrees to the direction of travel.



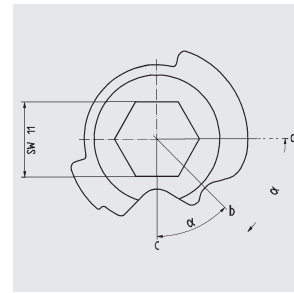
Fitting R36-32S 30 M6 Standard

Tube fitting for 32 mm inside tube diameter. M6 threaded hole for fitting with two screws in the direction to travel, 7 mm from the top of the castor to the centre of the fitting hole. Cam hole 90 degrees to the direction of travel.



Cam positions:
a) Total lock
b) Free
c) Directional lock

Actuating angle options α
2 x 45° or
2 x 30°

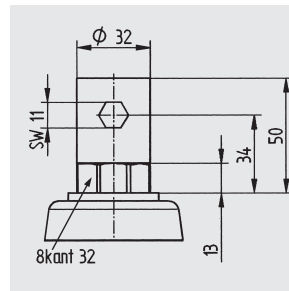


New fittings R36-34 and R36 XS

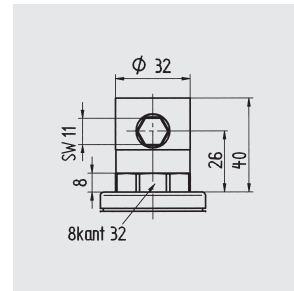
Tube fitting for 32 mm inside tube diameter.

Advantages:

- The stem will be vertically fixed by the hexagonal bar
- Torsion will be avoided by the octagonal profil bar
- Adjustment with the frame of the bed
- Fitting screws are not necessary



R 36-34



R 36 XS

Ball Pen System

The lever to engage the locking mechanism is always actuated from the same position.

Cam positions:

- a) Total lock
- b) Free

